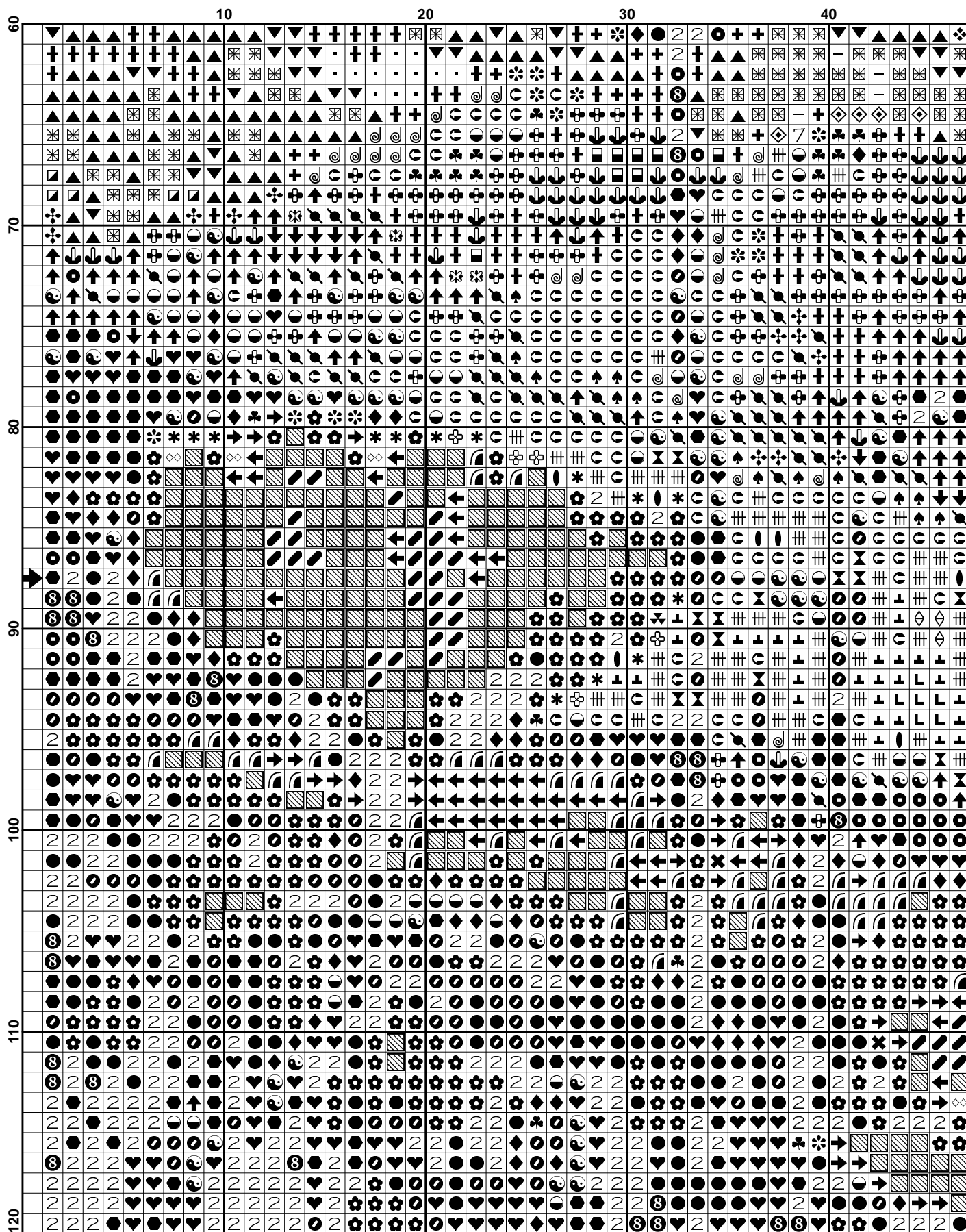


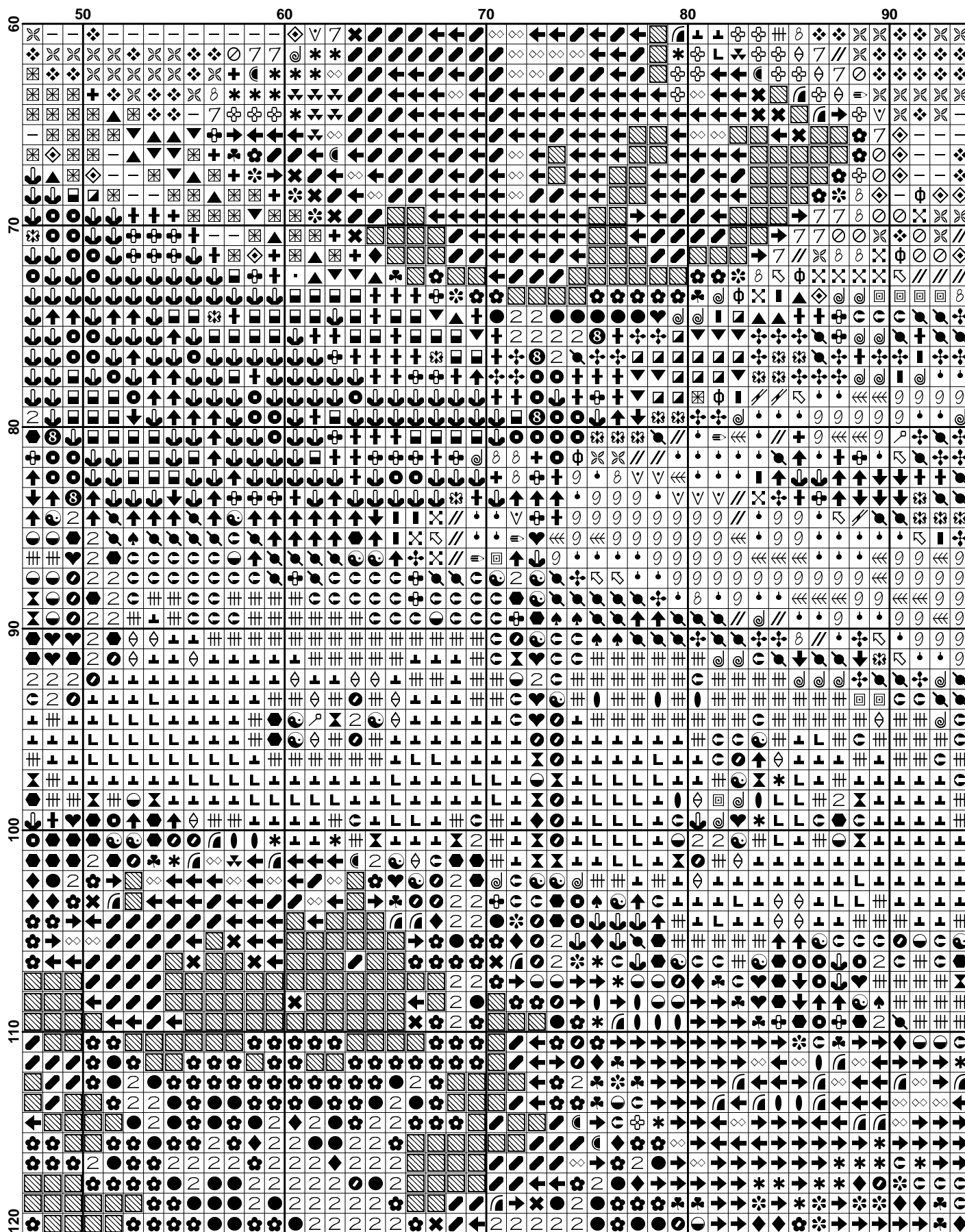
(8)

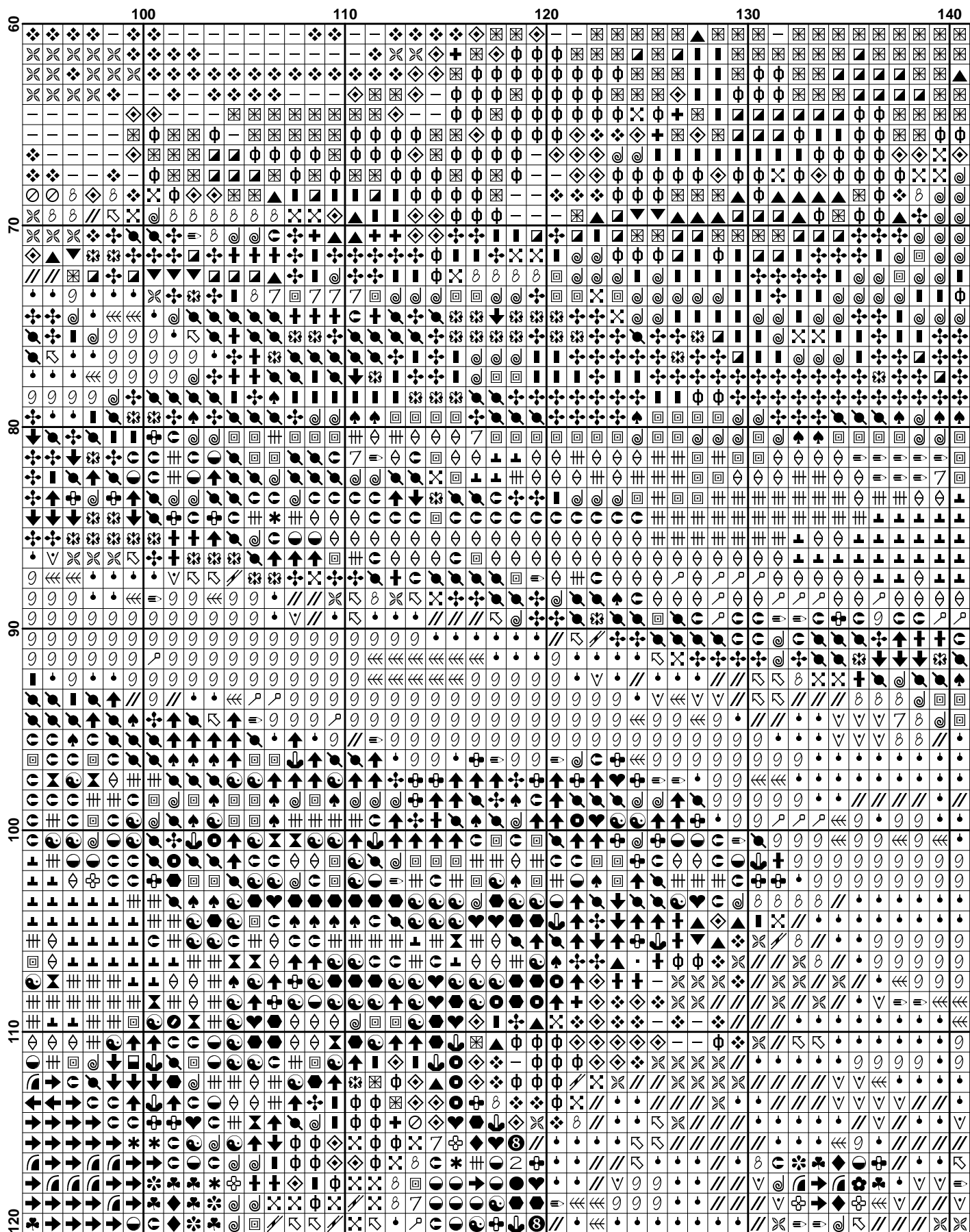
[illegible]

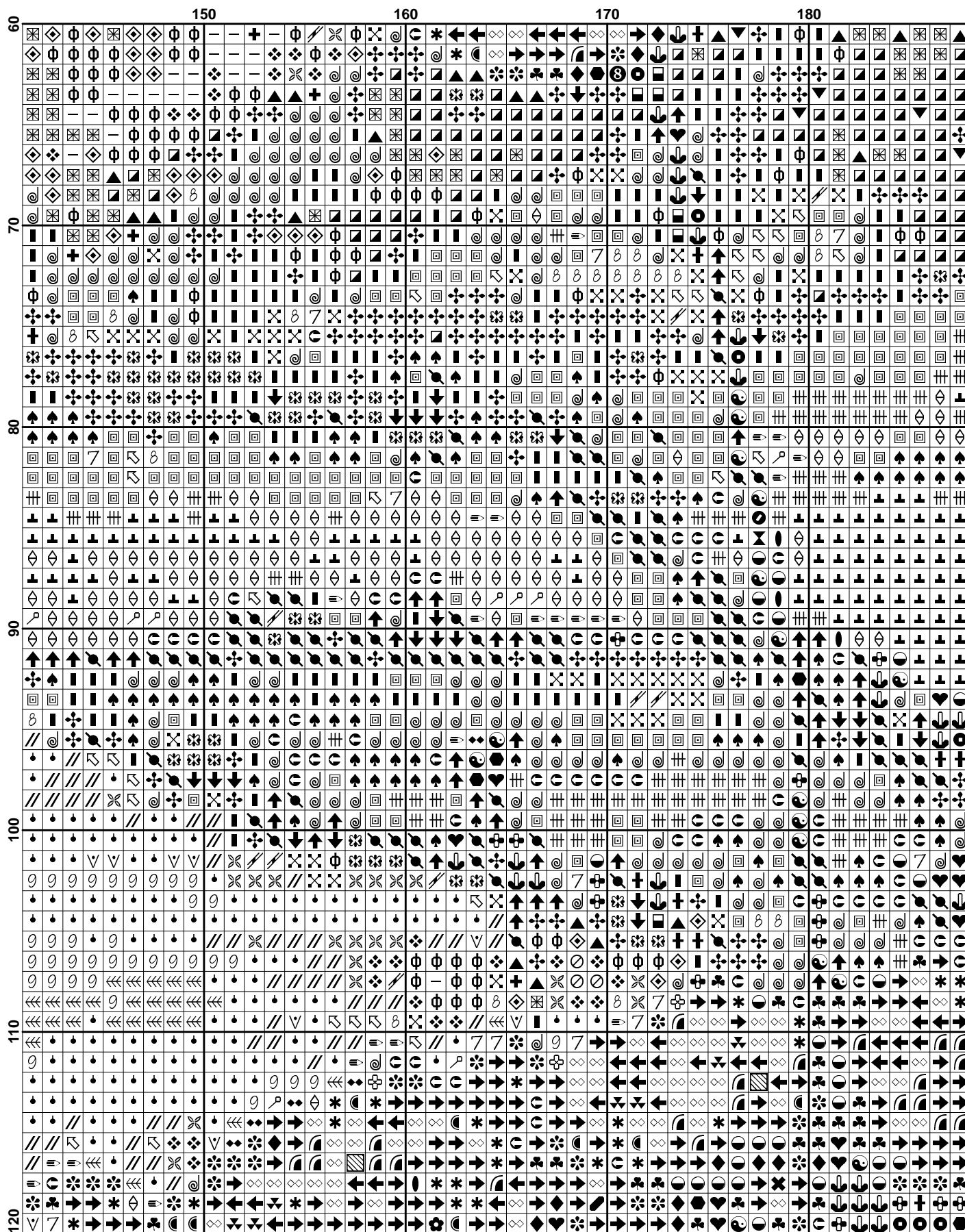
(10)

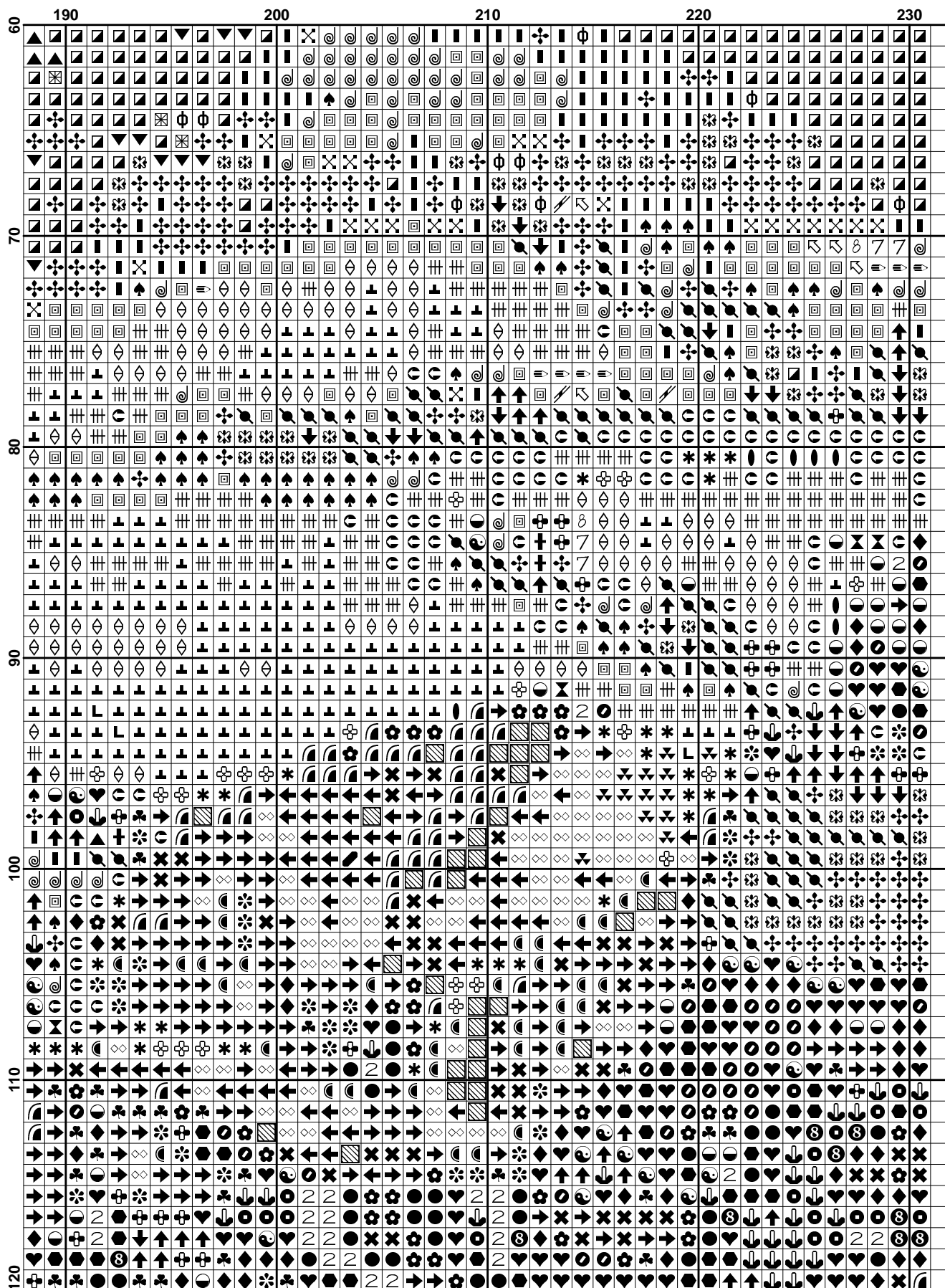
[illegible]



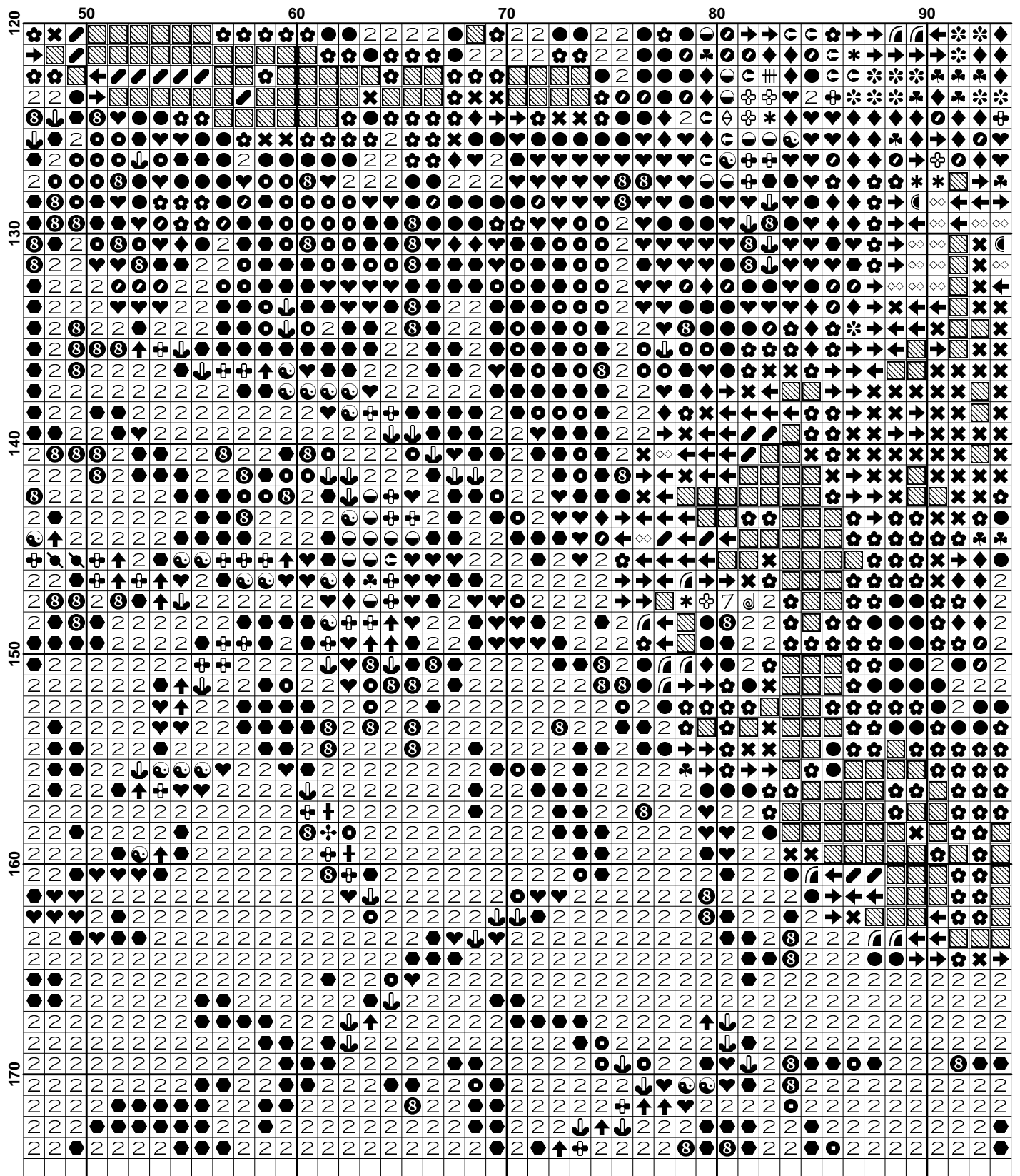


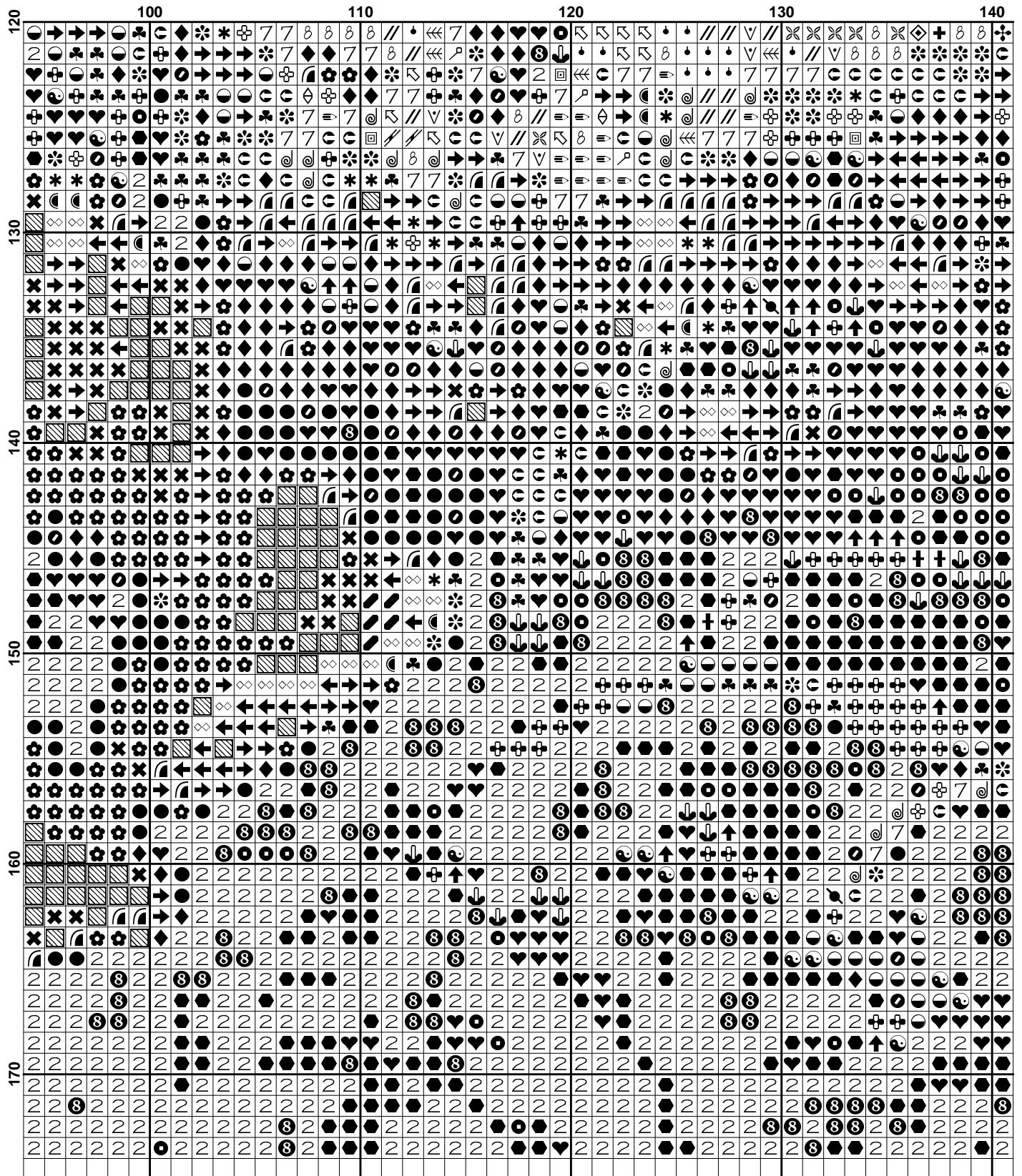


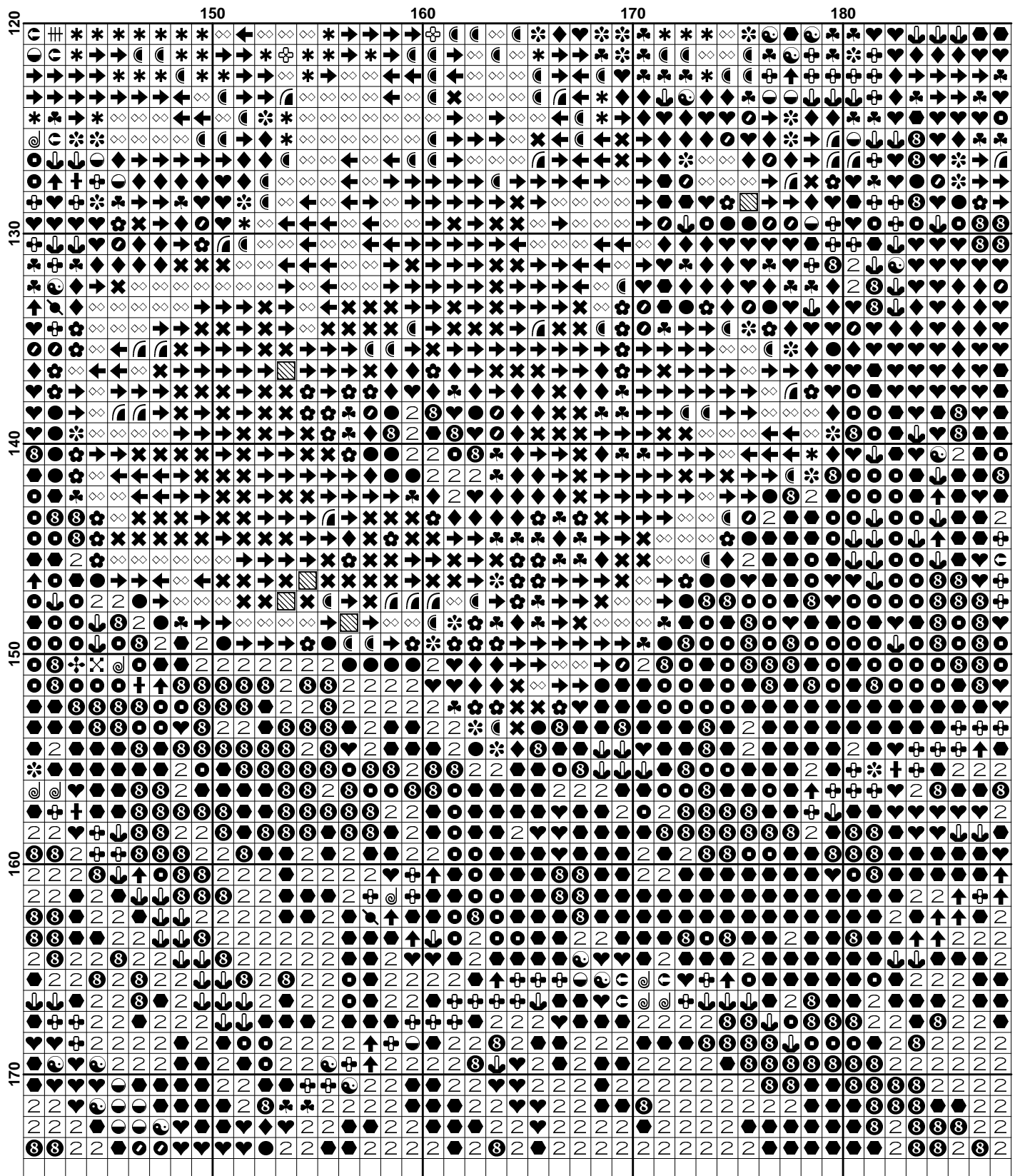




[illegible]




























[illegible]

Pattern Name: Red Poppies at River Valley
Designed By: Painting by Fred Marsh
Company: Artecy Cross Stitch
Copyright: Artecy Cross Stitch
Fabric: Aida 14, White
 230w X 173h Stitches
Size(s): 14 Count, 16-3/8w X 12-1/4h in
 16 Count, 14-3/8w X 10-3/4h in
 18 Count, 12-3/4w X 9-1/2h in

Floss Used for Full Stitches:

Symbol	Strands	Type	Number	Color
	2	DMC	150	Dusty Rose-UL VY DK
	2	DMC	154	Grape-VY DK
	2	DMC	156	Blue Violet-MD LT
	2	DMC	161	Gray Blue
	2	DMC	162	Blue-UL VY LT
	2	DMC	163	Celadon Green-MD
	2	DMC	165	Moss Green-VY LT
	2	DMC	225	Shell Pink-UL VY LT
	2	DMC	304	Christmas Red-MD
	2	DMC	310	Black
	2	DMC	317	Pewter Gray
	2	DMC	334	Baby Blue-MD
	2	DMC	341	Blue Violet-LT
	2	DMC	355	Terra Cotta-DK
	2	DMC	469	Avocado Green
	2	DMC	500	Blue Green-VY DK
	2	DMC	501	Blue Green-DK
	2	DMC	520	Fern Green-DK
	2	DMC	564	Jade-VY LT
	2	DMC	598	Turquoise-LT
	2	DMC	666	Christmas Red-BRT
	2	DMC	721	Orange Spice-MD
	2	DMC	725	Topaz
	2	DMC	758	Terra Cotta-VY LT
	2	DMC	762	Pearl Gray-VY LT
	2	DMC	775	Baby Blue-VY LT
	2	DMC	779	Cocoa-DK
	2	DMC	794	Cornflower Blue-LT
	2	DMC	798	Delft Blue-DK
	2	DMC	799	Delft Blue-MD
	2	DMC	807	Peacock Blue
	2	DMC	809	Delft Blue
	2	DMC	823	Navy Blue-DK
	2	DMC	826	Blue-MD
	2	DMC	827	Blue-VY LT
	2	DMC	832	Golden Olive
	2	DMC	838	Beige Brown-VY DK
	2	DMC	900	Burnt Orange-DK
	2	DMC	902	Garnet-VY DK
	2	DMC	913	Nile Green-MD
	2	DMC	930	Antique Blue-DK
	2	DMC	961	Dusty Rose-DK
	2	DMC	964	Sea Green-LT
	2	DMC	993	Aquamarine-LT
	2	DMC	3047	Yellow Beige-LT
	2	DMC	3072	Beaver Gray-VY LT
	2	DMC	3325	Baby Blue-LT
	2	DMC	3348	Yellow Green-LT

Symbol	Strands	Type	Number	Color
	2	DMC	3364	Pine Green
	2	DMC	3705	Melon-DK
	2	DMC	3721	Shell Pink-DK
	2	DMC	3740	Antique Violet-DK
	2	DMC	3743	Antique Violet-VY LT
	2	DMC	3747	Blue Violet-VY LT
	2	DMC	3750	Antique Blue-VY DK
	2	DMC	3752	Antique Blue-VY LT
	2	DMC	3765	Peacock Blue-VY DK
	2	DMC	3766	Peacock Blue-LT
	2	DMC	3770	Tawny-VY LT
	2	DMC	3778	Terra Cotta-LT
	2	DMC	3787	Brown Gray-DK
	2	DMC	3799	Pewter Gray-VY DK
	2	DMC	3811	Turquoise-VY LT
	2	DMC	3814	Aquamarine
	2	DMC	3817	Celadon Green-LT
	2	DMC	3835	Grape-MD
	2	DMC	3848	Teal Green-MD
	2	DMC	3849	Teal Green-LT
	2	DMC	3865	Winter White

* To work out the size of the finished article, take the number of stitches and divide it by the count of your fabric (e.g 14,16,18 count aida etc) to get the size in inches. Times it by 2.5 to get centimetres. We have the sizes in inches shown above.

* You should begin at the centre of the pattern. To find the centre of the pattern it is just a matter of locating the arrows at the top and left hand side of the patterns, they are determined by dividing the stitch numbers wide and high in half. Where the two points meet that is the centre.
















* To put the pattern together look in the top and bottom corners. The page numbers in brackets () show which page number it joins up to. Page 1 always starts at the top left hand side of the pattern.

* Pattern is for personal use only and is not to be sold, copied or redistributed in any form. Copyright of Artacy Cross Stitch.

* 230 stitches wide by 173 stitches high, 69 colours used

Usage Summary**Strands Per Skein:** 6**Skein Length:** 313.0 in

Type	Number	Full	Half	Quarter	Petite	Back(in)	Str(in)	Spec(in)	French	Bead	Skein Est.
DMC 150	150	369	0	0	0	0.0	0.0	0.0	0	0	1.000
DMC 154	154	531	0	0	0	0.0	0.0	0.0	0	0	1.000
DMC 156	156	300	0	0	0	0.0	0.0	0.0	0	0	1.000
DMC 161	161	219	0	0	0	0.0	0.0	0.0	0	0	1.000
DMC 162	162	839	0	0	0	0.0	0.0	0.0	0	0	1.000
DMC 163	163	481	0	0	0	0.0	0.0	0.0	0	0	1.000
DMC 165	165	599	0	0	0	0.0	0.0	0.0	0	0	1.000
DMC 225	225	500	0	0	0	0.0	0.0	0.0	0	0	1.000
DMC 304	304	785	0	0	0	0.0	0.0	0.0	0	0	1.000
DMC 310	310	4567	0	0	0	0.0	0.0	0.0	0	0	2.000
DMC 317	317	442	0	0	0	0.0	0.0	0.0	0	0	1.000
DMC 334	334	479	0	0	0	0.0	0.0	0.0	0	0	1.000
DMC 341	341	470	0	0	0	0.0	0.0	0.0	0	0	1.000
DMC 355	355	256	0	0	0	0.0	0.0	0.0	0	0	1.000
DMC 469	469	52	0	0	0	0.0	0.0	0.0	0	0	1.000
DMC 500	500	2053	0	0	0	0.0	0.0	0.0	0	0	1.000
DMC 501	501	412	0	0	0	0.0	0.0	0.0	0	0	1.000
DMC 520	520	340	0	0	0	0.0	0.0	0.0	0	0	1.000
DMC 564	564	475	0	0	0	0.0	0.0	0.0	0	0	1.000
DMC 598	598	149	0	0	0	0.0	0.0	0.0	0	0	1.000
DMC 666	666	302	0	0	0	0.0	0.0	0.0	0	0	1.000
DMC 721	721	99	0	0	0	0.0	0.0	0.0	0	0	1.000
DMC 725	725	74	0	0	0	0.0	0.0	0.0	0	0	1.000
DMC 758	758	146	0	0	0	0.0	0.0	0.0	0	0	1.000
DMC 762	762	592	0	0	0	0.0	0.0	0.0	0	0	1.000
DMC 775	775	803	0	0	0	0.0	0.0	0.0	0	0	1.000
DMC 779	779	530	0	0	0	0.0	0.0	0.0	0	0	1.000
DMC 794	794	646	0	0	0	0.0	0.0	0.0	0	0	1.000
DMC 798	798	177	0	0	0	0.0	0.0	0.0	0	0	1.000
DMC 799	799	1602	0	0	0	0.0	0.0	0.0	0	0	1.000
DMC 807	807	437	0	0	0	0.0	0.0	0.0	0	0	1.000
DMC 809	809	1477	0	0	0	0.0	0.0	0.0	0	0	1.000
DMC 823	823	718	0	0	0	0.0	0.0	0.0	0	0	1.000
DMC 826	826	808	0	0	0	0.0	0.0	0.0	0	0	1.000
DMC 827	827	1107	0	0	0	0.0	0.0	0.0	0	0	1.000
DMC 832	832	33	0	0	0	0.0	0.0	0.0	0	0	1.000
DMC 838	838	322	0	0	0	0.0	0.0	0.0	0	0	1.000
DMC 900	900	619	0	0	0	0.0	0.0	0.0	0	0	1.000
DMC 902	902	840	0	0	0	0.0	0.0	0.0	0	0	1.000
DMC 913	913	232	0	0	0	0.0	0.0	0.0	0	0	1.000
DMC 930	930	584	0	0	0	0.0	0.0	0.0	0	0	1.000
DMC 961	961	155	0	0	0	0.0	0.0	0.0	0	0	1.000
DMC 964	964	25	0	0	0	0.0	0.0	0.0	0	0	1.000
DMC 993	993	421	0	0	0	0.0	0.0	0.0	0	0	1.000
DMC 3047	3047	643	0	0	0	0.0	0.0	0.0	0	0	1.000
DMC 3072	3072	296	0	0	0	0.0	0.0	0.0	0	0	1.000
DMC 3325	3325	710	0	0	0	0.0	0.0	0.0	0	0	1.000
DMC 3348	3348	614	0	0	0	0.0	0.0	0.0	0	0	1.000
DMC 3364	3364	613	0	0	0	0.0	0.0	0.0	0	0	1.000
DMC 3705	3705	568	0	0	0	0.0	0.0	0.0	0	0	1.000
DMC 3721	3721	998	0	0	0	0.0	0.0	0.0	0	0	1.000
DMC 3740	3740	275	0	0	0	0.0	0.0	0.0	0	0	1.000
DMC 3743	3743	527	0	0	0	0.0	0.0	0.0	0	0	1.000
DMC 3747	3747	1030	0	0	0	0.0	0.0	0.0	0	0	1.000

Type	Number	Full	Half	Quarter	Petite	Back(in)	Str(in)	Spec(in)	French	Bead	Skein Est.
 DMC 3750	3750	591	0	0	0	0.0	0.0	0.0	0	0	1.000
 DMC 3752	3752	454	0	0	0	0.0	0.0	0.0	0	0	1.000
 DMC 3765	3765	84	0	0	0	0.0	0.0	0.0	0	0	1.000
 DMC 3766	3766	250	0	0	0	0.0	0.0	0.0	0	0	1.000
 DMC 3770	3770	720	0	0	0	0.0	0.0	0.0	0	0	1.000
 DMC 3778	3778	209	0	0	0	0.0	0.0	0.0	0	0	1.000
 DMC 3787	3787	303	0	0	0	0.0	0.0	0.0	0	0	1.000
 DMC 3799	3799	1175	0	0	0	0.0	0.0	0.0	0	0	1.000
 DMC 3811	3811	92	0	0	0	0.0	0.0	0.0	0	0	1.000
 DMC 3814	3814	96	0	0	0	0.0	0.0	0.0	0	0	1.000
 DMC 3817	3817	535	0	0	0	0.0	0.0	0.0	0	0	1.000
 DMC 3835	3835	202	0	0	0	0.0	0.0	0.0	0	0	1.000
 DMC 3848	3848	198	0	0	0	0.0	0.0	0.0	0	0	1.000
 DMC 3849	3849	552	0	0	0	0.0	0.0	0.0	0	0	1.000
 DMC 3865	3865	988	0	0	0	0.0	0.0	0.0	0	0	1.000

* Look for Skein Estimate (Est.) above to see how many skeins you need of each colour to complete the pattern.

